

Automatic Bobbin Winder Directions

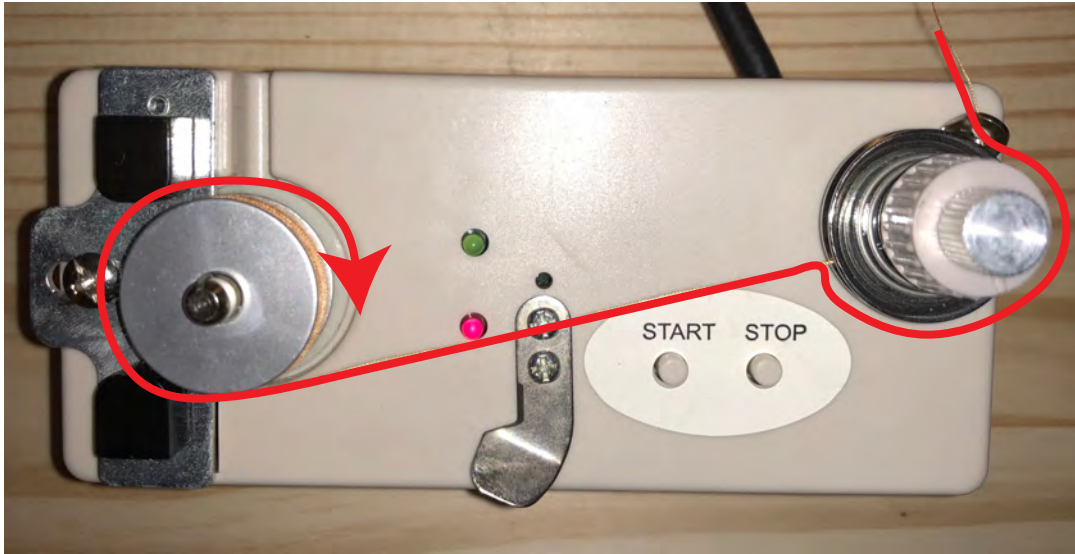


Figure 1

To load the bobbin you will follow the path out lined in (figure 1).

To wind the bobbin you will need to have a thread spool holder (figure 2).

To set the size of the bobbin you loosen the screw and slide the black or silver slider beside where you place your bobbin so arch matches edge of your bobbin (figure 3).

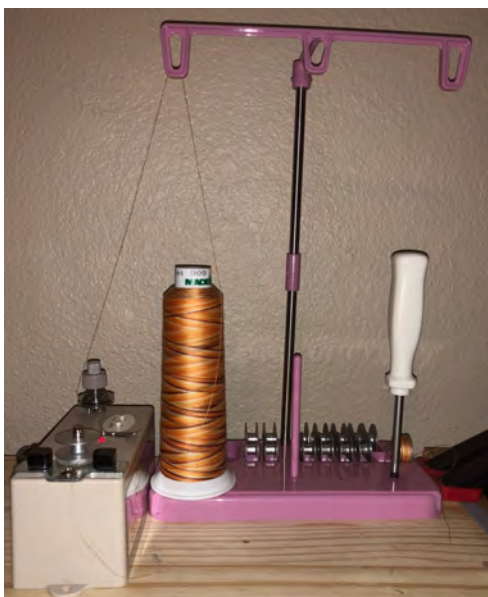


Figure 2

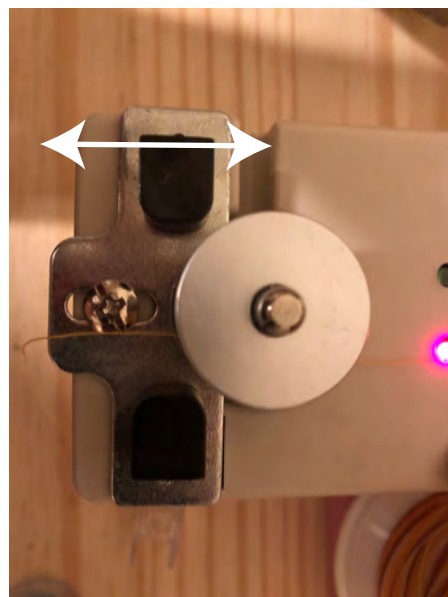


Figure 3